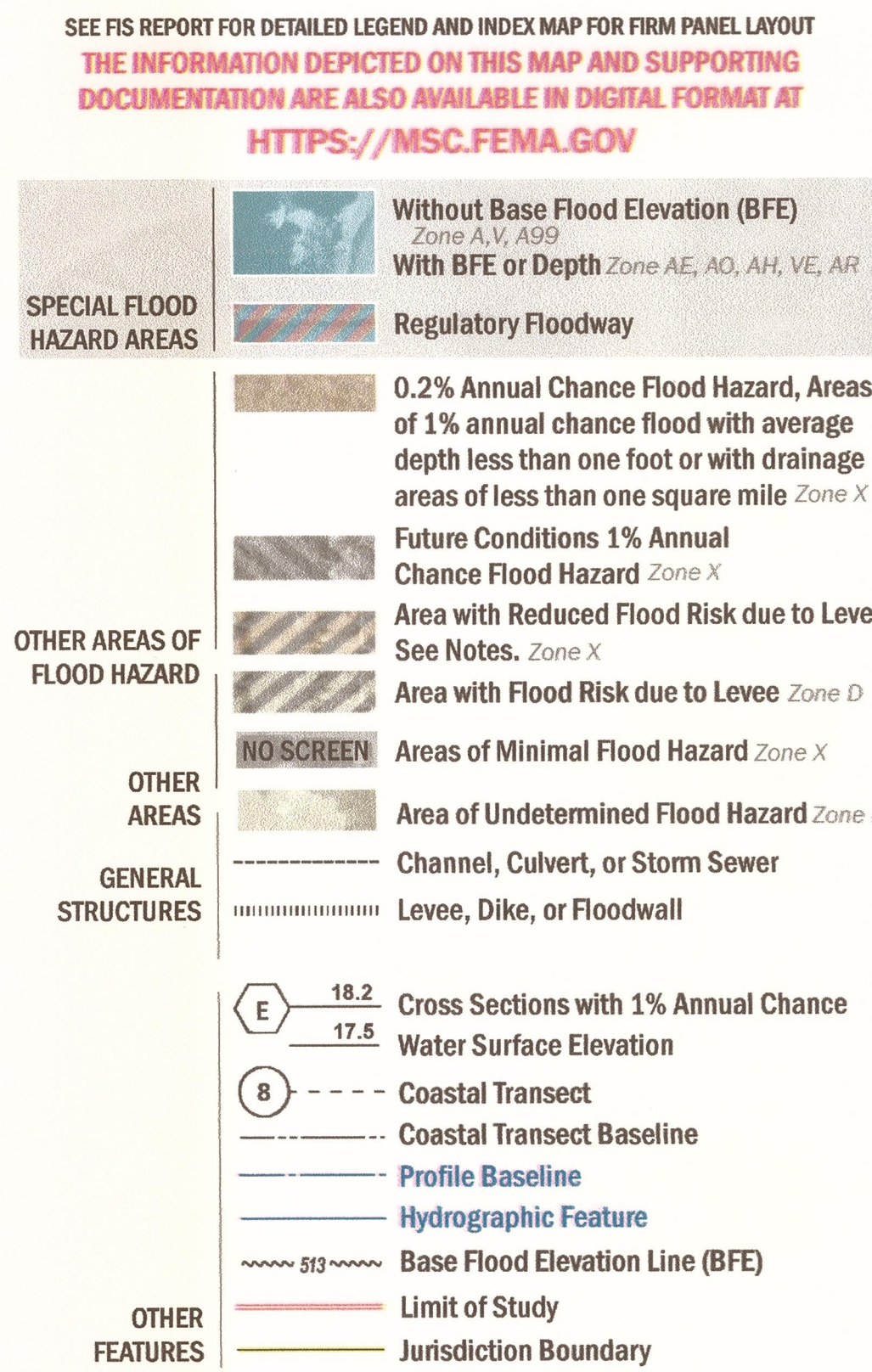


FLOOD HAZARD INFORMATION



NOTES TO USERS

For information and questions about this Flood Insurance Rate Map (FIRM), available products associated with this FIRM, including historic versions, the current map date for each FIRM panel, how to order products, or the National Flood Insurance Program (NFIP) in general, please call the FEMA Mapping and Insurance Exchange at 1-877-FEMA-MAP (1-877-368-3277) or visit the FEMA Flood Map Service Center website at <https://msc.fema.gov>. Available products may include previously issued Letters of Map Change, a Flood Insurance Study Report, and/or digital versions of this map. Many of these products can be ordered or obtained directly from the website.

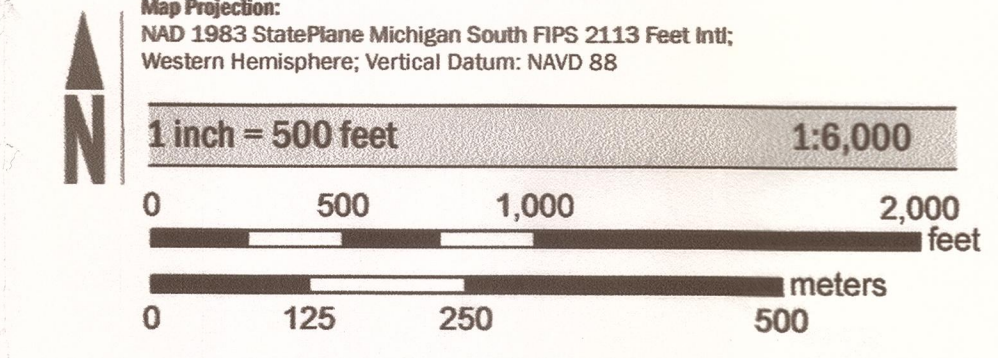
Communities annexing land on adjacent FIRM panels must obtain a current copy of the adjacent panel as well as the current FIRM index. These may be ordered directly from the Flood Map Service Center at the number listed above.

For community and countywide map dates refer to the Flood Insurance Study Report for this jurisdiction.

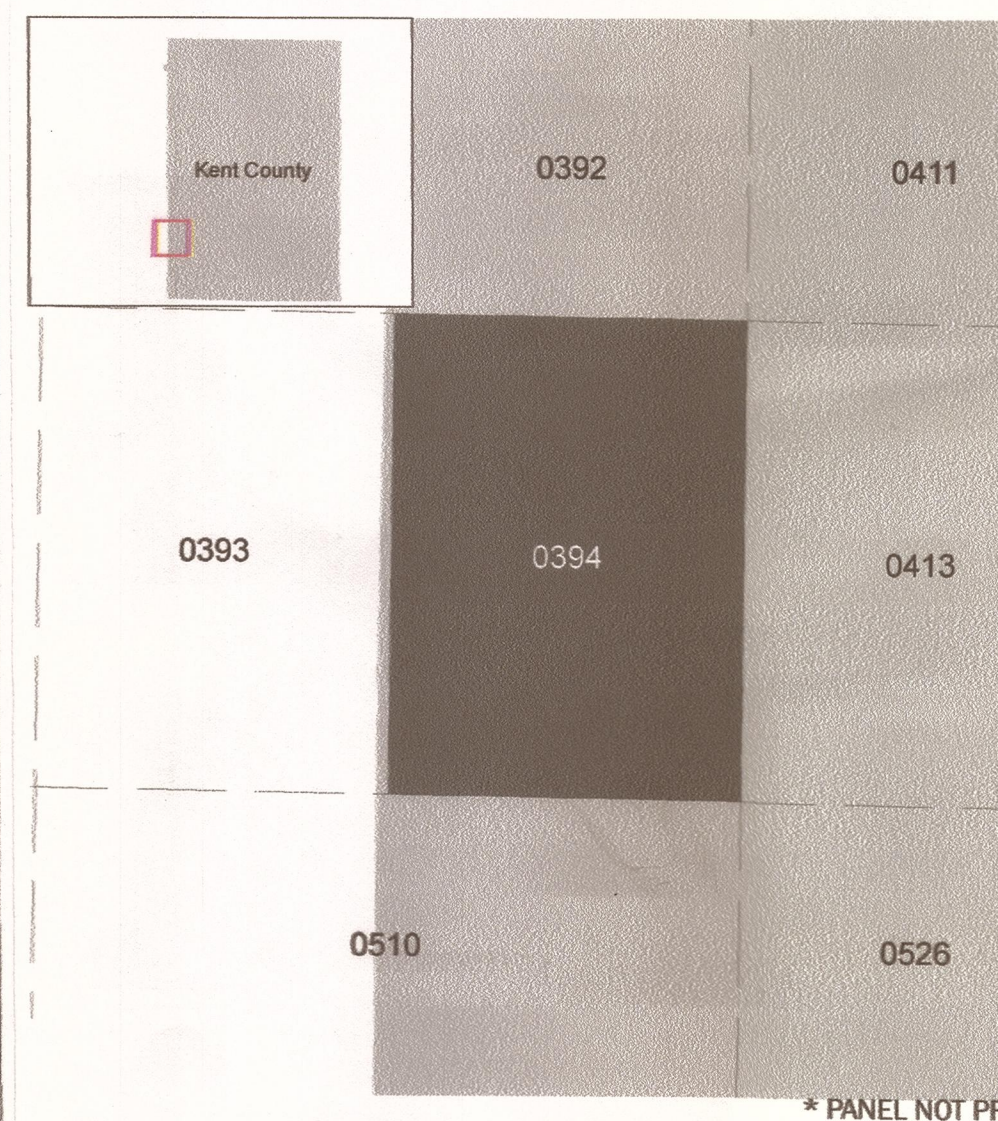
To determine if flood insurance is available in this community, contact your insurance agent or call the National Flood Insurance Program at 1-800-438-6622.

Base map information shown on this FIRM was provided in digital format by multiple agencies. The following sources provided base data: Kent County, Michigan; the United States Geological Survey (USGS); the United States Department of Agriculture (USDA); and the Center for Shared Solutions and Technology Partnerships. Imagery was provided in digital format by the United States Department of Agriculture, dated 2016, and has a 1-meter ground resolution.

SCALE



PANEL LOCATOR



FEMA
National Flood Insurance Program

NATIONAL FLOOD INSURANCE PROGRAM
 FLOOD INSURANCE RATE MAP

KENT COUNTY, MICHIGAN
 All Jurisdictions

PANEL 394 OF 625

Panel Contains:

COMMUNITY	NUMBER	PANEL	SUFFIX
GRANDVILLE, CITY OF	260271	0394	D
WYOMING, CITY OF	260111	0394	D

Back Creek + Huczenka Drain

VERSION NUMBER 2.6.3.0
 MAP NUMBER 26081C0394D
 EFFECTIVE DATE FEBRUARY 23, 2023